

Opendiem Quick Start Guide

Opendiem-QS-0001

| | | | |
|----------|----------|------------|---|
| Revision | 5.0.1 | | |
| Status | Initials | Date | Comment |
| Released | RAC | 11/12/2010 | Updated format and content |
| Update | RAC | 12/11/2010 | Add reboot after initial install prior to licensing |
| | | | |
| | | | |
| | | | |



Engine



Connect



Designer

Opendiem-QS-0001

OPENDIEM QUICK START GUIDE

Getting Started with the Opendiem Suite of Products

Introduction

This quick start guide is designed to get your project up and running quickly. Additional information can be found in the on-line Help screens, and the Opendiem Training Manuals.

Objective

Install the Opendiem products that you have purchased on an existing server that meets or exceeds the minimum requirements listed below:

Hardware

Customer provided* meeting the following suggested requirements.

(Note that the critical nature of the systems under control should dictate the complexity of the server running the Opendiem Suite of applications).

- Pentium 4 class CPU, 2.8GHz; 2GB RAM; 160GB Hard Disk Drive; 10/100/1000 BaseT Network Interface Card or Wireless Network Connection.

Software

Customer provided* meeting the following suggested requirements.

- Operating Systems: Microsoft Windows Server 2003; XP Professional, SP3; Windows7 Pro-32bit; Windows Server 2008. Requires Microsoft IIS, and .NET 2.0 (incl. ASP.NET), and Java by Sun/Oracle.

* Building Clouds can provide a turn-key hardware/software solution.

Configuration of the Opendiem Software Suite

The final configuration of the software suite depends on the requirements of the end user(s). Please refer to the published price list from Building Clouds for all possible configurations.



Engine



Connect



Designer

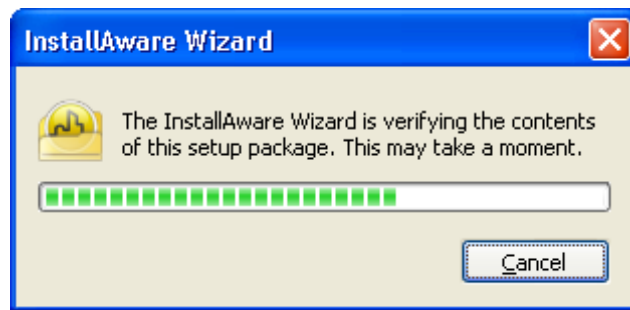
Getting Started

From the Server/PC desktop, navigate to the location of your Opendiem installation package

(Opendiem Setup.exe) and double-click the file/icon to begin the installation.



The installation package will run a self-check script to verify the package contents.



When the package has been verified the installation Wizard will begin, Click, Next>
If Microsoft IIS (Internet Information Services) and Java have not been installed this window will alert you. You must install IIS before proceeding*. Java can be installed later, but now is a good time. * See the Opendiem Training Addendum #0000-IIS for installation instructions.





Engine



Connect



Designer

Opendiem-QS-0001

OPENDIEM QUICK START GUIDE

The Wizard checks for previously installed versions of Opendiem. This may take a few moments.



When the progress bar completes, Click Next> to begin the installation





Engine

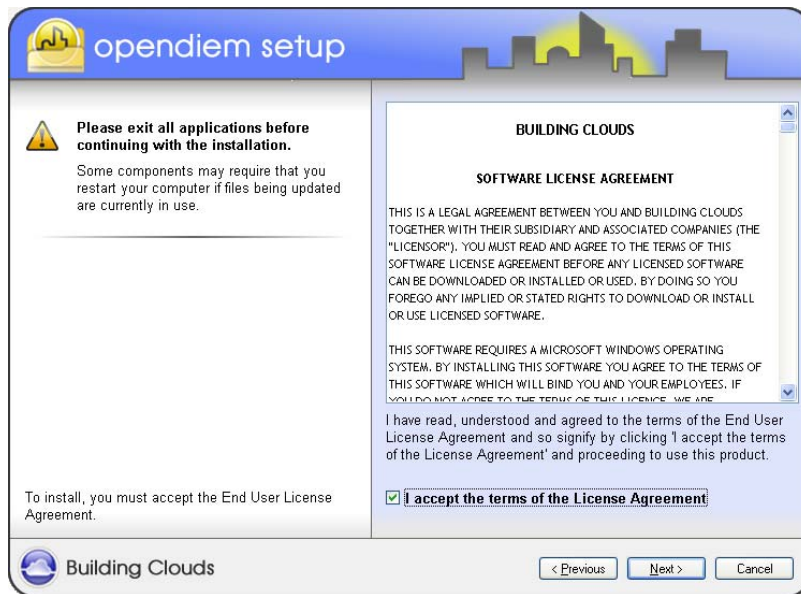


Connect



Designer

Read and then accept the License Agreement terms by clicking the checkbox. A copy of the agreement will be installed on the server for future reference. Click, Next>
If you need to make corrections at any time, Click <Previous



Any important issues or updates to the software will be listed on the next screen. Review them (if any) and then Click, Next>



Engine

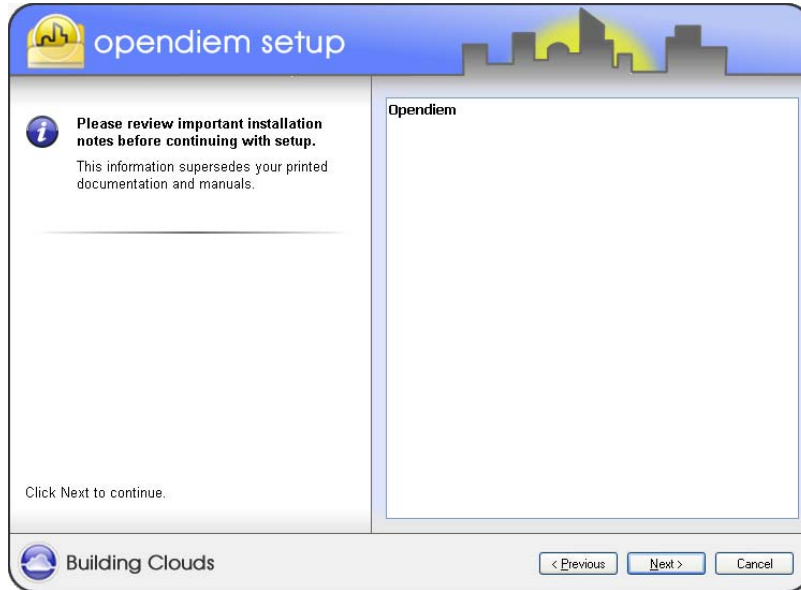


Connect

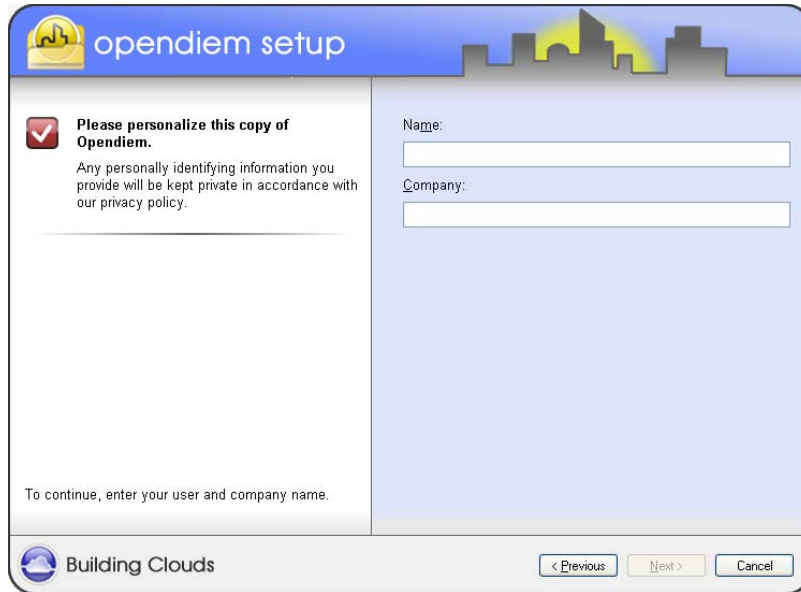


Designer

OPENDIEM QUICK START GUIDE



Personalize this copy of Opendiem by entering the system Name and Company. Click, Next>



Choose your installation features, Full or Custom. Most users should choose Full. For Custom setup instructions consult your Opendiem provider. Click the checkbox if you would like desktop shortcut icons to be added. Click, Next>



Engine

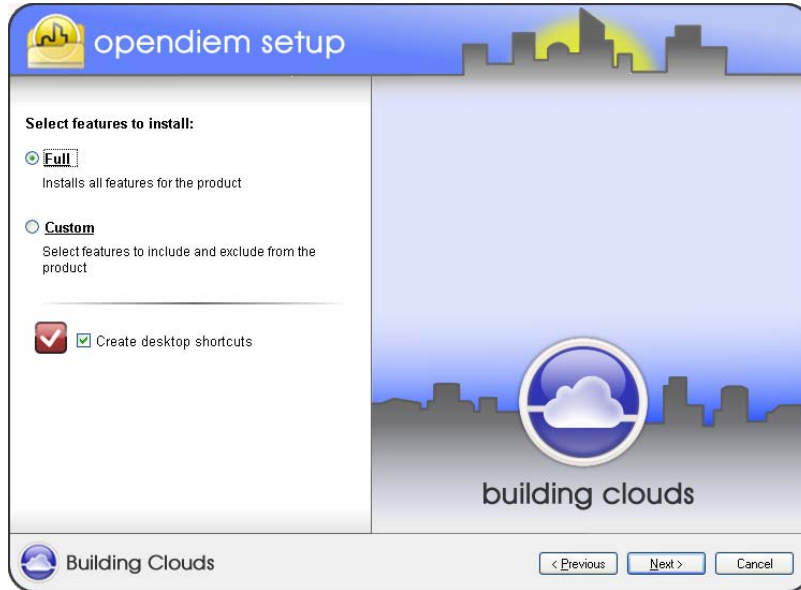


Connect

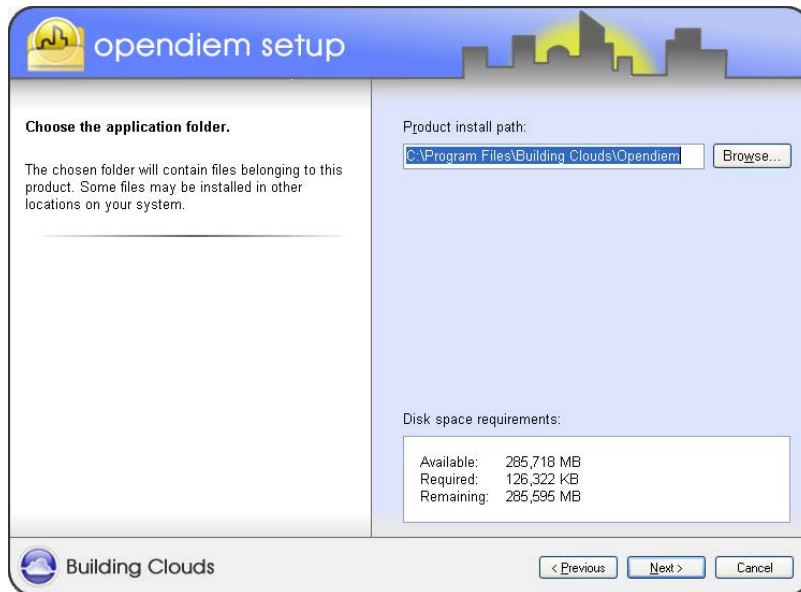


Designer

OPENDIEM QUICK START GUIDE



Accept the default application installation location, or browse to a custom location. Click, Next>



If Opendiem Connect is part of your Opendiem Suite, choose how the programs will run. Building Clouds recommends running as **applications** initially. This setting can be changed at anytime from the Opendiem Connect Console. Click, Next>



Engine

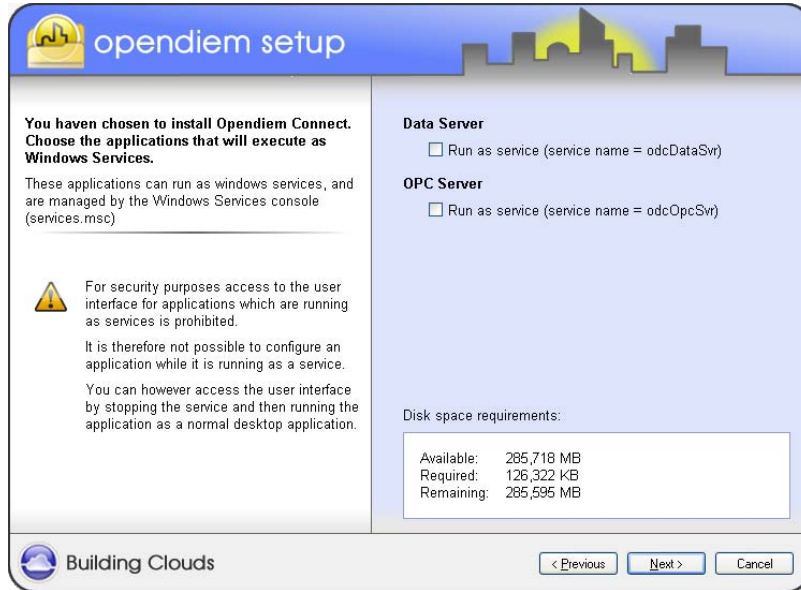


Connect

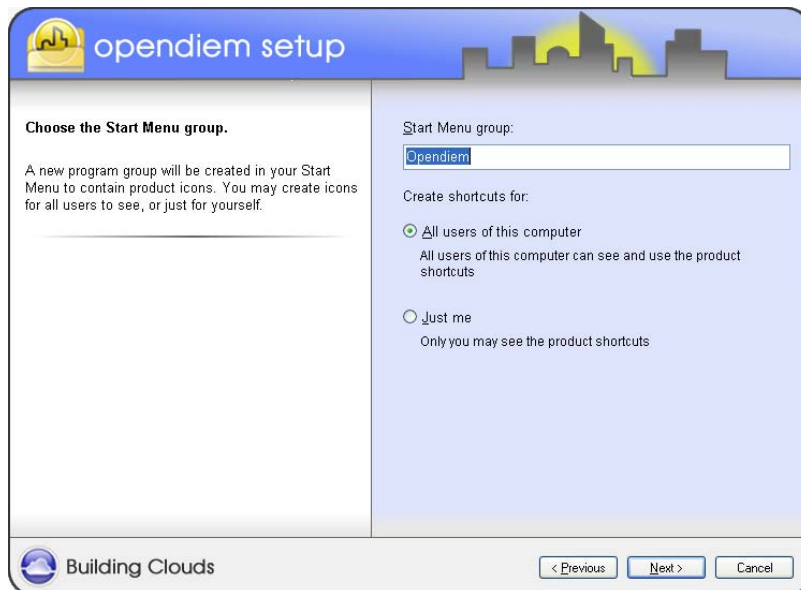


Designer

OPENDIEM QUICK START GUIDE



Choose a name for your Start Menu group, and check which users will have access to the system. The default settings are best here. Click, Next>



All the required information has been gathered, use the <Previous button to go back and modify any settings or Click, Next> to proceed with the installation.



Engine



Connect



Designer

Opendiem-QS-0001

OPENDIEM QUICK START GUIDE



This may take a few minutes to complete





Engine



Connect



Designer

OPENDIEM QUICK START GUIDE

The software installation is now complete. Use the checkboxes to run Opendiem and/or validate your Java version when you Click, Finish.



***Note:**

If your Opendiem has not been licensed, perform a computer restart (reboot) now*

Building the Opendiem Project



Launch the Opendiem Engine by clicking on the desktop shortcut or clicking on the Start menu and choosing All Programs > Opendiem > Opendiem Engine.

If your system has not been licensed by Building Clouds, Inc. you will be presented with the following Alert message. Click, OK to proceed with the licensing process or to run for 10 days in demo mode.





Engine



Connect

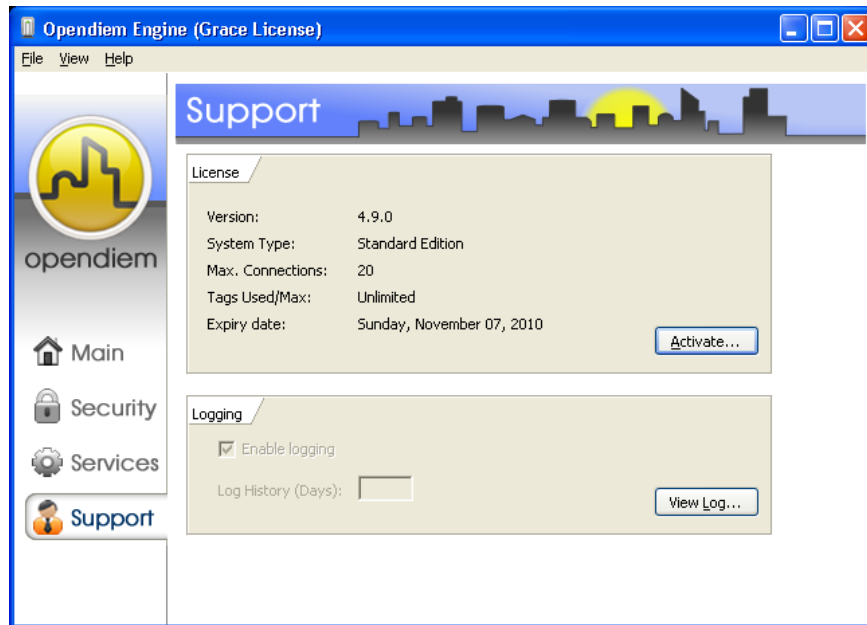


Designer

Opendiem-QS-0001

OPENDIEM QUICK START GUIDE

Note the (Grace License) message in the header reminding you to register your software. Click the Activate... button and you will be taken to the License Details window.



User Name and Company will be populated based on your input during the installation Wizard. You must contact Building Clouds to obtain your Serial Number. Once obtained, carefully enter your Serial Number on this screen.

You do not need to check or un-check any of the Service Name boxes, these will be automatically updated when your license key is activated based on your software purchase.

If you have your Serial Number AND your License Key, enter your Serial Number and click on the Activate... button

If you have your Serial Number but still need to obtain your License Key, Click the Copy to Clipboard button and your unique Registration Code will be copied to the computer clipboard.

Paste this code into an email and send it to registration@buildingclouds.com

Your License Key will be sent via return email once payment has been secured. The Grace License will remain in effect for 10 days.



Engine

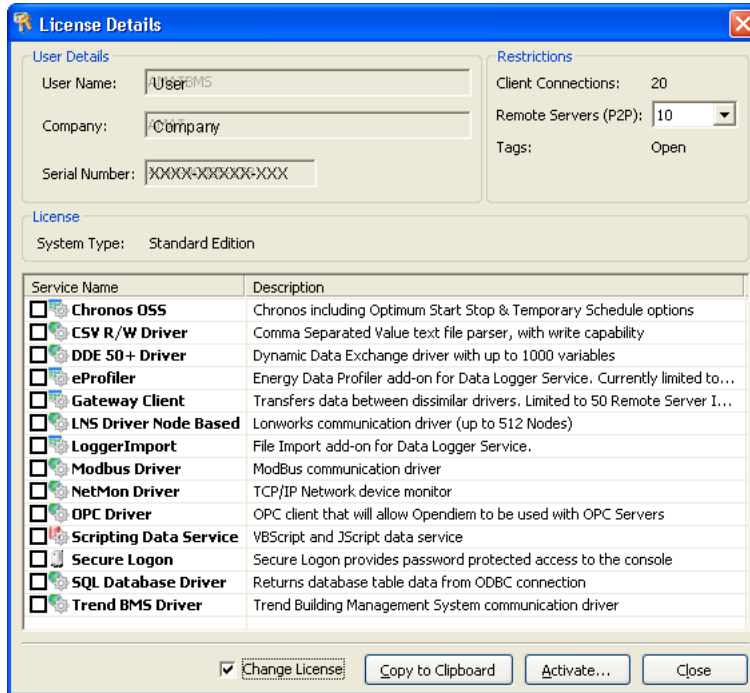


Connect

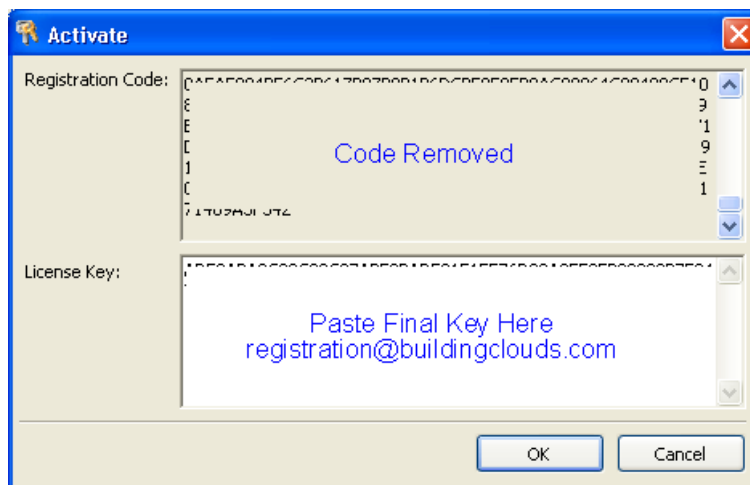


Designer

OPENDIEM QUICK START GUIDE



Paste your final License Key into the bottom pane of the Activation window. Click, OK





Engine



Connect

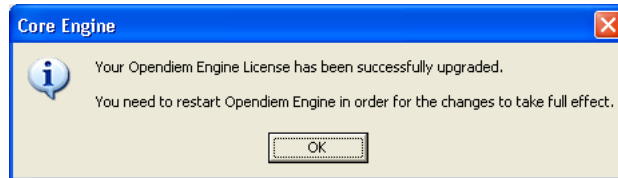


Designer

Opendiem-QS-0001

OPENDIEM QUICK START GUIDE

Upon successful registration the following notification will appear. Click OK to restart the Engine.



In order to create an Opendiem project using the Designer tool, Designer will need to be licensed.

From the Windows Start menu select the **Opendiem** folder and select the **Opendiem Designer** icon to run Designer. You may also have a desktop shortcut icon for Designer

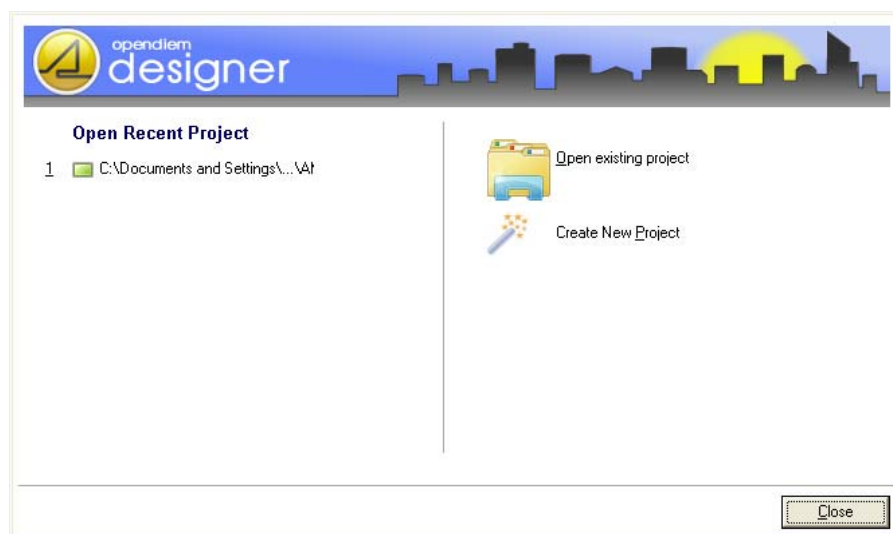


which can be double-clicked to start as well.

Read and then click the **OK** button to accept the 'Tip of the Day' if presented.

Note that you cannot open a project or screen file in Designer until a final License Key is entered into the Activation window.

To activate your copy of Designer Click the Close button on the welcome screen to dismiss the window.





Engine



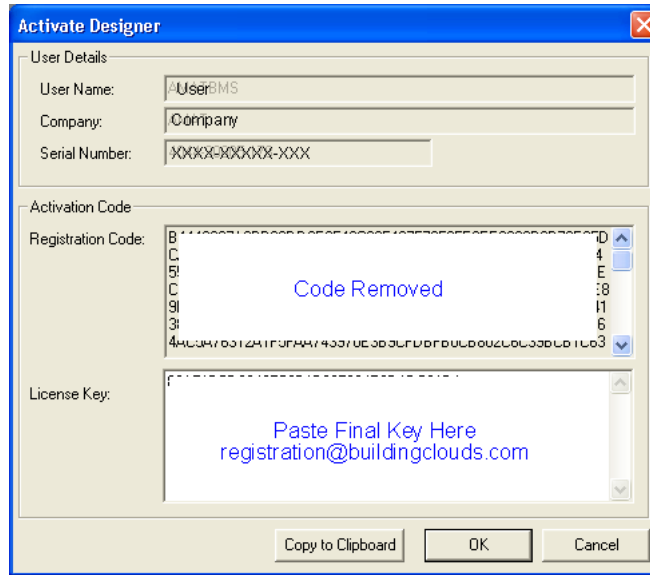
Connect



Designer

OPENDIEM QUICK START GUIDE

From the top tool bar of Designer’s main window choose Help > Activate...



User Name and Company will be populated based on your input during the installation Wizard. You must contact Building Clouds to obtain your Serial Number. Once obtained, carefully enter your Serial Number on this screen.

If you have your Serial Number AND your License Key, enter your Serial Number and click on the Activate... button

If you have your Serial Number but still need to obtain your License Key, Click the Copy to Clipboard button and your unique Registration Code will be copied to the computer clipboard. Paste this code into an email and send it to registration@buildingclouds.com Your License Key will be sent via return email once payment has been secured.

Once all License Keys have been entered successfully in both Designer and Engine you will be able to create the Opendiem Project. Instructions begin on the next page.



Engine



Connect



Designer

Opendiem-QS-0001

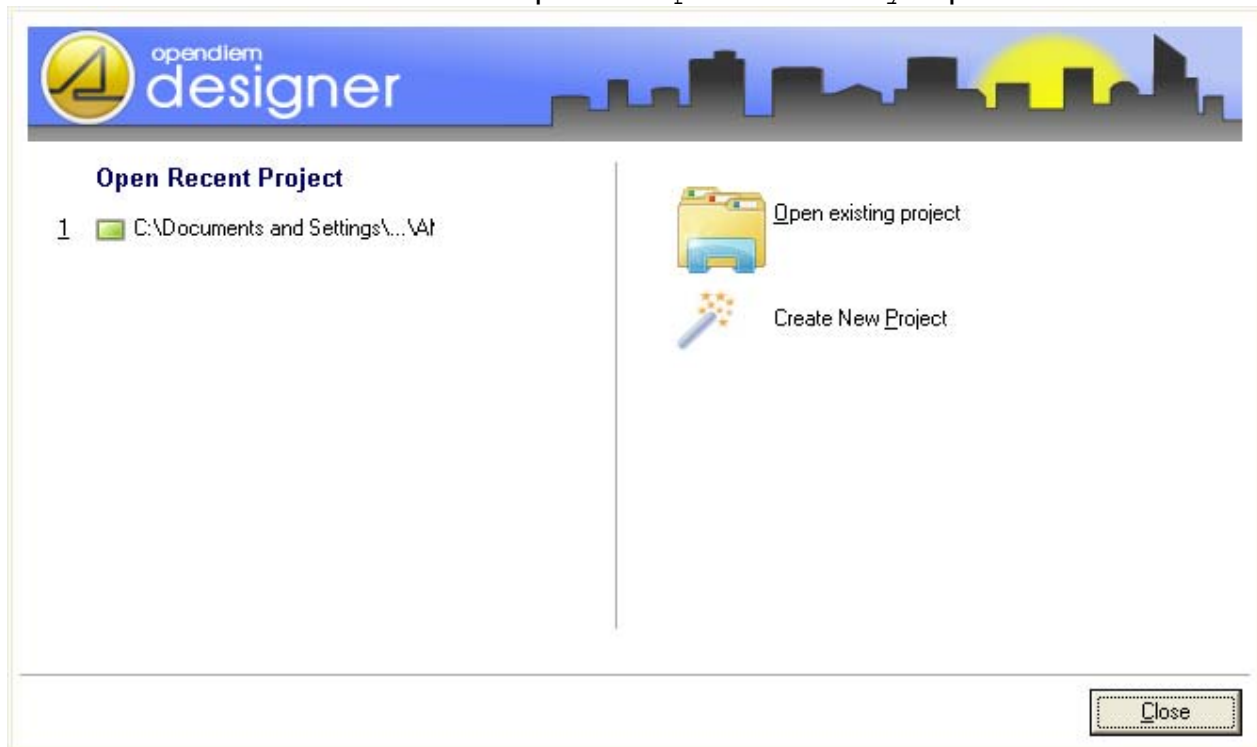
OPENDIEM QUICK START GUIDE

From the Windows Start menu select the **Opendiem** folder and select the **Opendiem Designer** icon to run Designer. You may also have a desktop shortcut icon for Designer



which can be double-clicked to start as well.

Read and then click the **OK** button to accept the 'Tip of the Day' if presented.



From the Select Project screen shown above, select **Create New Project**, which will start the 'Opendiem Designer Project Wizard'.



Engine

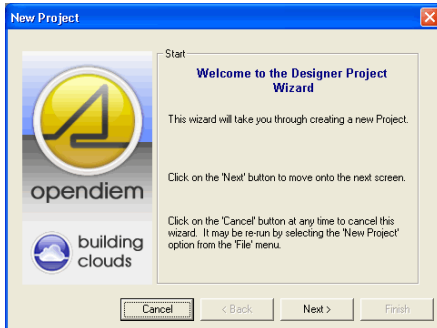


Connect

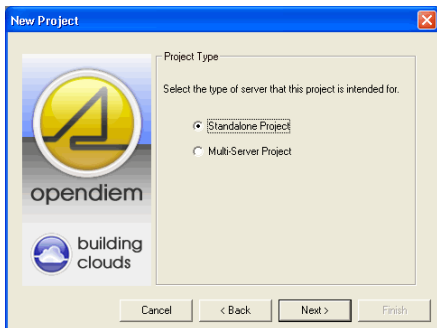


Designer

Opendiem Designer New Project Wizard

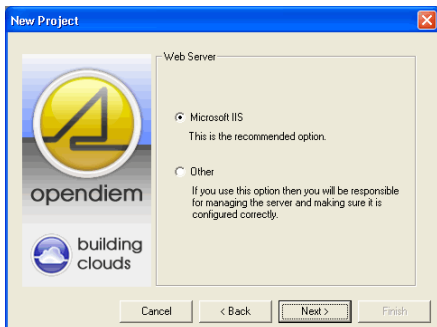


1. Click **Next** on the Wizard start screen.



2. Select Standalone or Multi-Server Project (Standalone is most common)

Click **Next**



3. Select the Web Server you wish to use, the recommended option is Microsoft IIS

Click **Next**



Engine

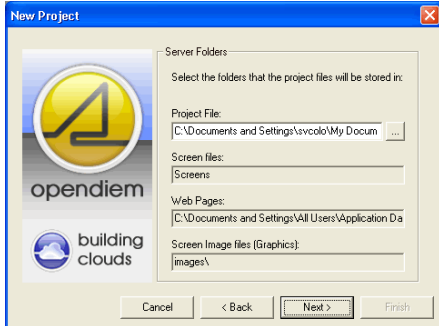


Connect



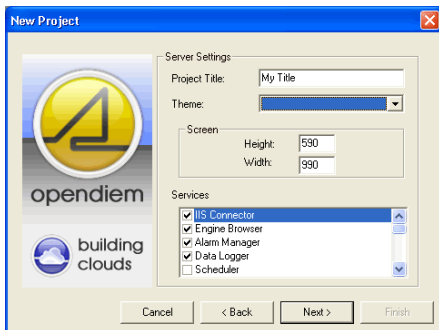
Designer

OPENDIEM QUICK START GUIDE



4. Select the folder that the Opendiem project files will be stored in and name the project.

Click **Next**

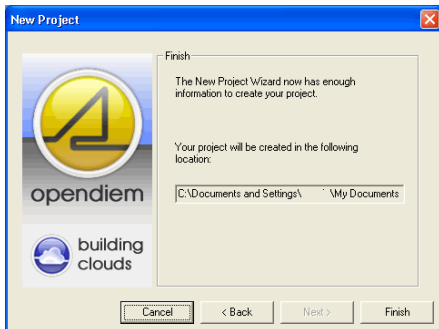


5. Server Settings. Enter the Project Title and select the services required on the server. For this exercise ensure that all of the services are checked.

Each service may be added or removed later from the Opendiem Engine if required.

Opendiem screen size sets the default client screen size. Enter the desired Height and Width.

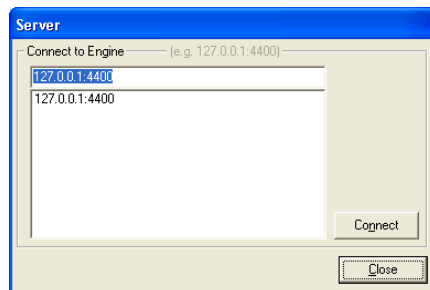
Click **Next**



6. Verify the project location path is correct.

Click **Finish** and the Designer wizard will create your project.

A **Server** dialogue box will appear as shown below, enter the IP address of your Server or LOCALHOST if working locally and click **Connect**





Engine



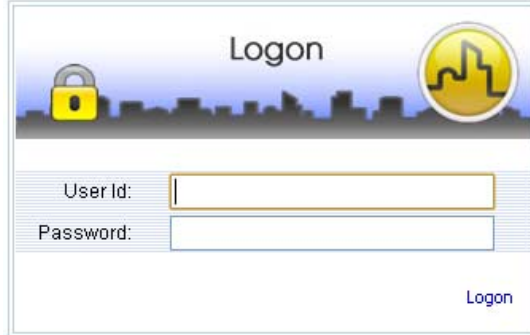
Connect



Designer

OPENDIEM QUICK START GUIDE

If security is enabled on the Server the following dialog will be displayed to allow you to connect.



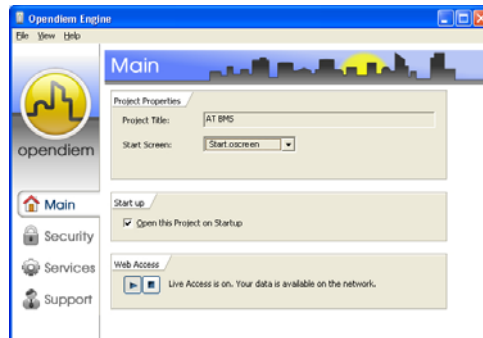
Loading the newly created project into Opendiem Server.

Ensure that Opendiem Engine is running on your server by checking that the Opendiem Engine Icon is visible in the system tray:



If not already running, start the Opendiem Engine. From the Windows Start menu select the **Opendiem** folder and select the **Opendiem Engine** icon.

To display Opendiem Engine, double click on the Opendiem Icon in the system tray or right click and select **Show Opendiem Engine**. The screen below will be displayed.



To load a new project into the Opendiem Engine select **File | Open Opendiem Project...** Browse to your project created with Designer (name.oproject) and select **Open**.

An Opendiem Engine dialogue will appear indicating that there are users currently logged on (The user is Designer). Select **Yes** and the old project will be closed and replaced by the project just created using Opendiem Designer.



Engine



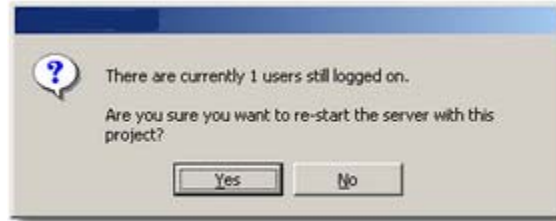
Connect



Designer

Opendiem-QS-0001

OPENDIEM QUICK START GUIDE



A progress bar will appear until the new project is fully loaded. By selecting **File | System Properties...** details of the currently loaded project can be viewed.

Information shown here includes the system type, the maximum number of concurrent client connections to the server, the location of the project file currently loaded, the GUID, system ID and the Opendiem Port Number. The system ID is for use in multi-Server projects and the Opendiem port number allows the default TCP/IP port of 4400 to be changed if required.

The Opendiem Engine contains four main screens, Main, Security, Services and Support. Each screen is selected by clicking on the appropriate text icon in the left hand panel. These screens will be detailed in later exercises.

On the Main screen in the Project Properties section there is a checkbox that sets the current project to automatically load each time the Opendiem Engine starts.

Much more detail on creating a project and loading services into the Engine can be found by reading the Opendiem Training Exercise #2 (Opendiem-TRN-0002).



Engine



Connect



Designer

Opendiem-QS-0001

OPENDIEM QUICK START GUIDE

Notes:

Version 5.00 November 2010

All Rights Reserved. Copyright © 2010 Building Clouds. Information contained in this document regarding device applications is intended through suggestion only and may be superseded by updates. No representation or warranty is given and no liability is assumed by Building Clouds, Inc. with respect to accuracy or use of such information or infringement of patents arising from such use or otherwise. Use of Building Clouds products as critical components in life support systems is not authorized except with expressly written approval by Building Clouds. No Licenses are conveyed, implicitly or otherwise, under any intellectual property rights.

All Trademarks mentioned herein are the property of their respective companies

Building Clouds, Inc.

3229 Whipple Road
Union City, CA 94587

Email: sales@buildingclouds.com

<http://www.buildingclouds.com>