

Opendiem Training

Technical Note

Migrating Altitude to Opendiem

(Applies to Windows XP and Server 2003)

Opendiem-TECH-0001

Revision	5.0.0		
Status	Initials	Date	Comment
Released	RMW	12/12/2010	Updated format and content



Engine



Connect



Designer

Opendiem-TECH-0001

OPENDIEM TRAINING TECH-0001

Technical Notes, Migrating Altitude to Opendiem

Introduction

The Opendiem Engine and Designer are directly compatible with the Altitude file structures and extensions. While Opendiem does use different file paths for the locations of graphics, images and web data migration of your existing Altitude project is a straight forward process and described below.

Instructions

Prior to starting make sure you have properly installed Opendiem by rebooting your PC after install and licensing of your installation. If you have used the connectivity driver of Altitude you will need to license those drivers under Opendiem also.

Please note that Opendiem can be installed on the same PC as your Altitude application. Since Opendiem is a new application and installation it does not share any of your legacy Altitude file paths.

If you have any questions please contact Technical Support by sending an email to:

support@buildingclouds.com



Engine



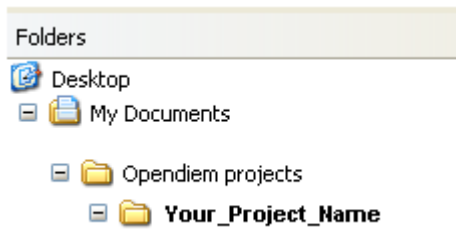
Connect



Designer

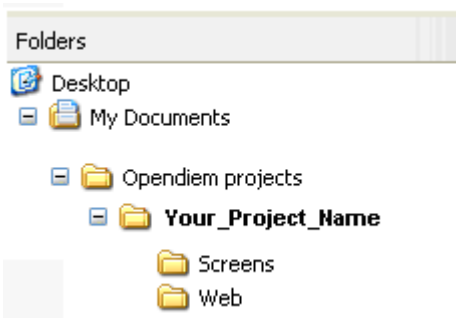
STEP-1

Opendiem Designer looks for the project files under "My Documents\Opendiem projects\". You may have had a separate project folder in your Altitude directory. If so then create a folder underneath the Opendiem projects folder.



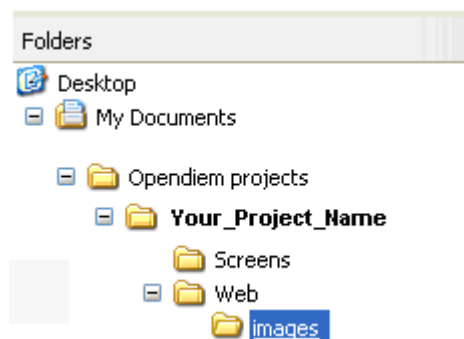
STEP-2

Create two new folders underneath the Opendiem projects folder. One called Screens and one called Web



STEP-3

Create one new folder underneath the Web folder called images.





Engine



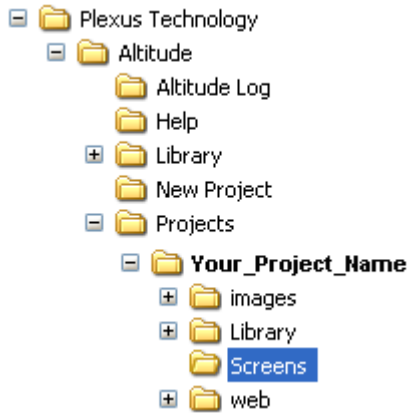
Connect



Designer

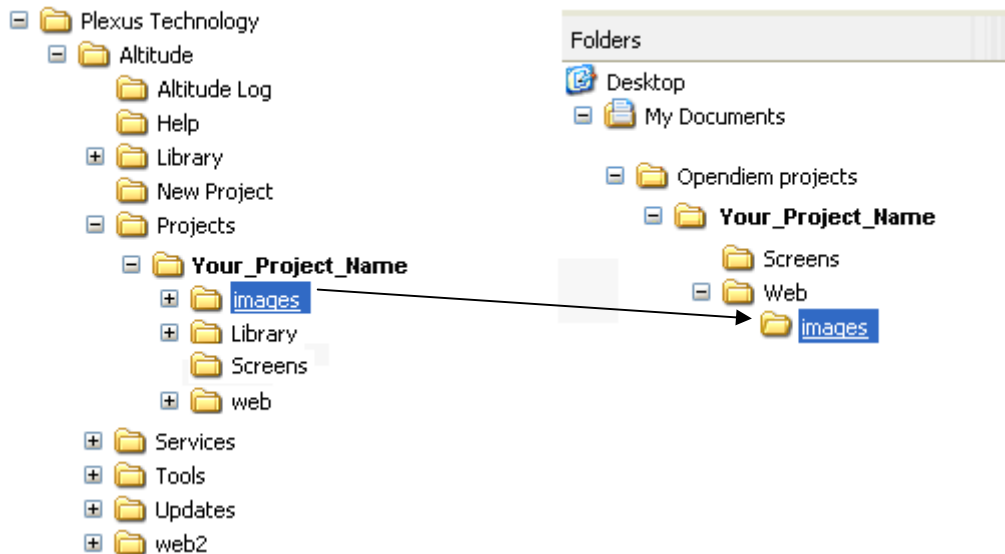
STEP-4

Locate your Altitude project "Screens" folder and copy the files to the "Screens" folder created in STEP-3.



STEP-5

Locate your Altitude project "images" folder and copy the files to the "images" folder created in STEP-4.





Engine



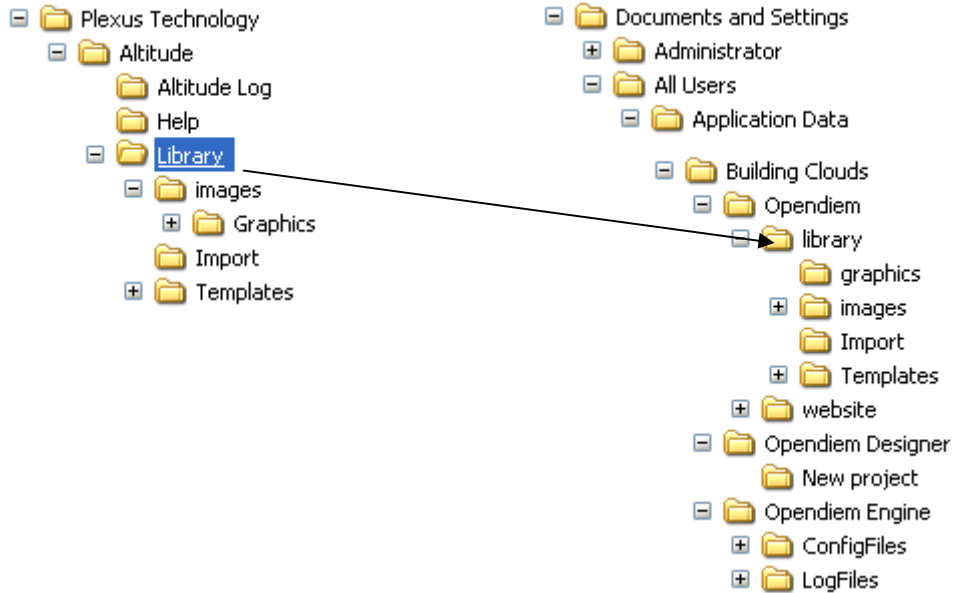
Connect



Designer

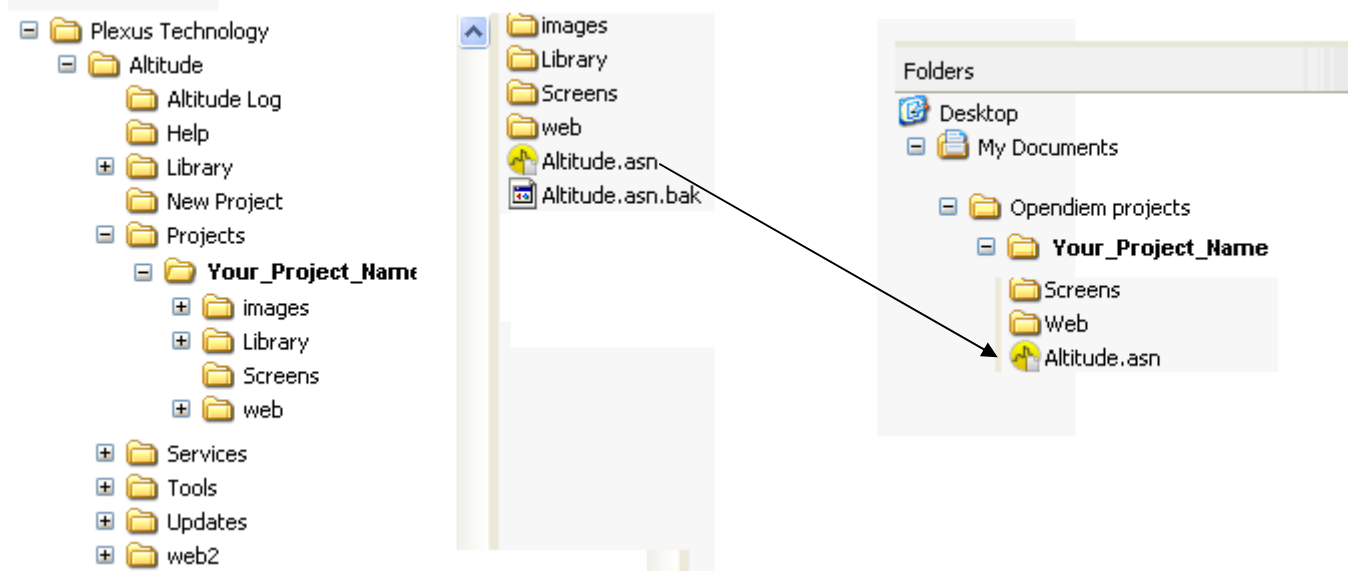
STEP-6

Locate your Altitude "Library" folder and copy over the Opendiem™ "Library" folder.



STEP-7

Locate your Altitude project file "Altitude.asn" and copy it to the project folder you created in STEP-1.





Engine



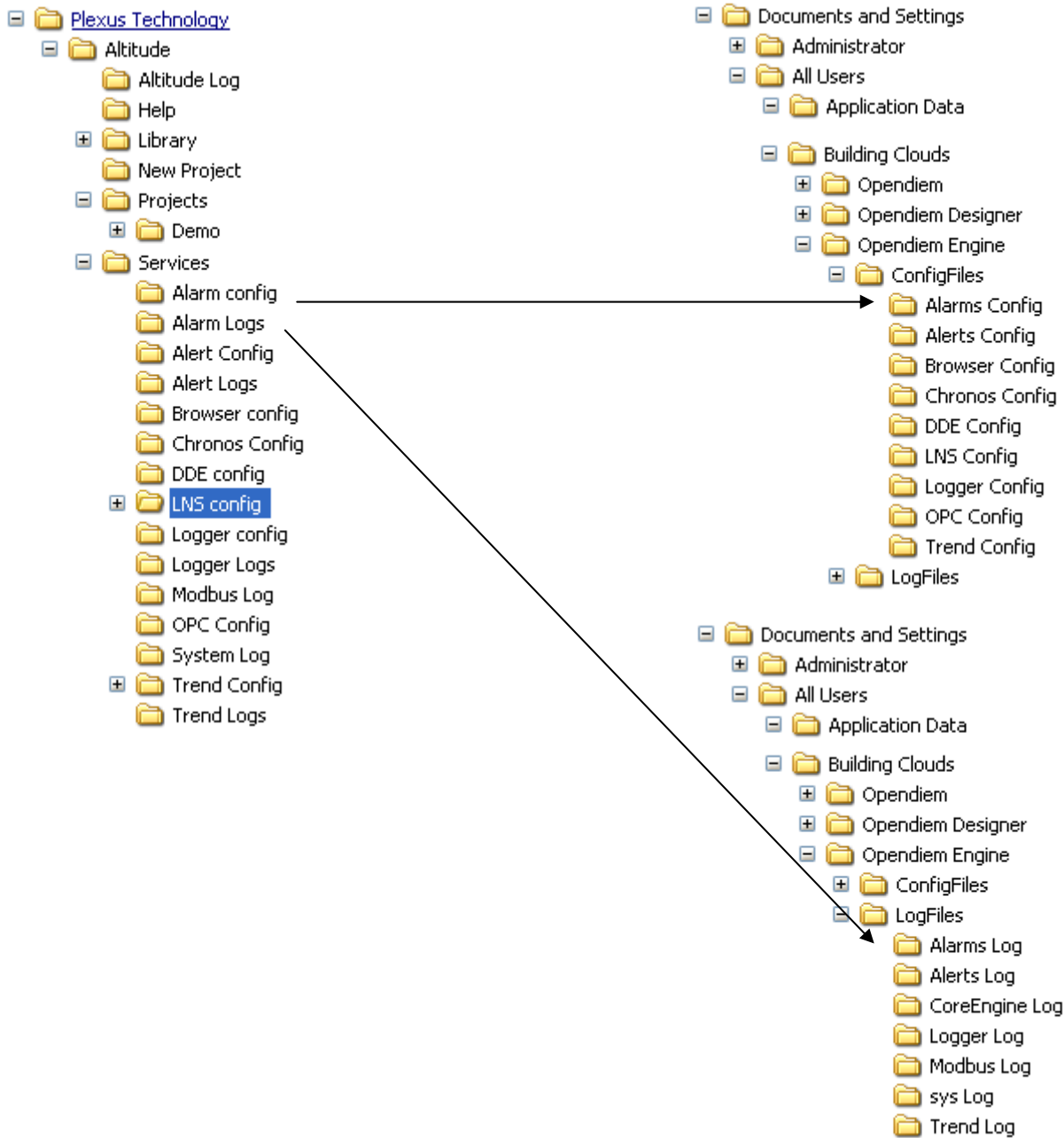
Connect



Designer

STEP-8

Copy the contents of your services configuration files from Altitude to the Opendiem. Note that there are now two directories. One for ConfigFiles and one for Logfiles.





Engine



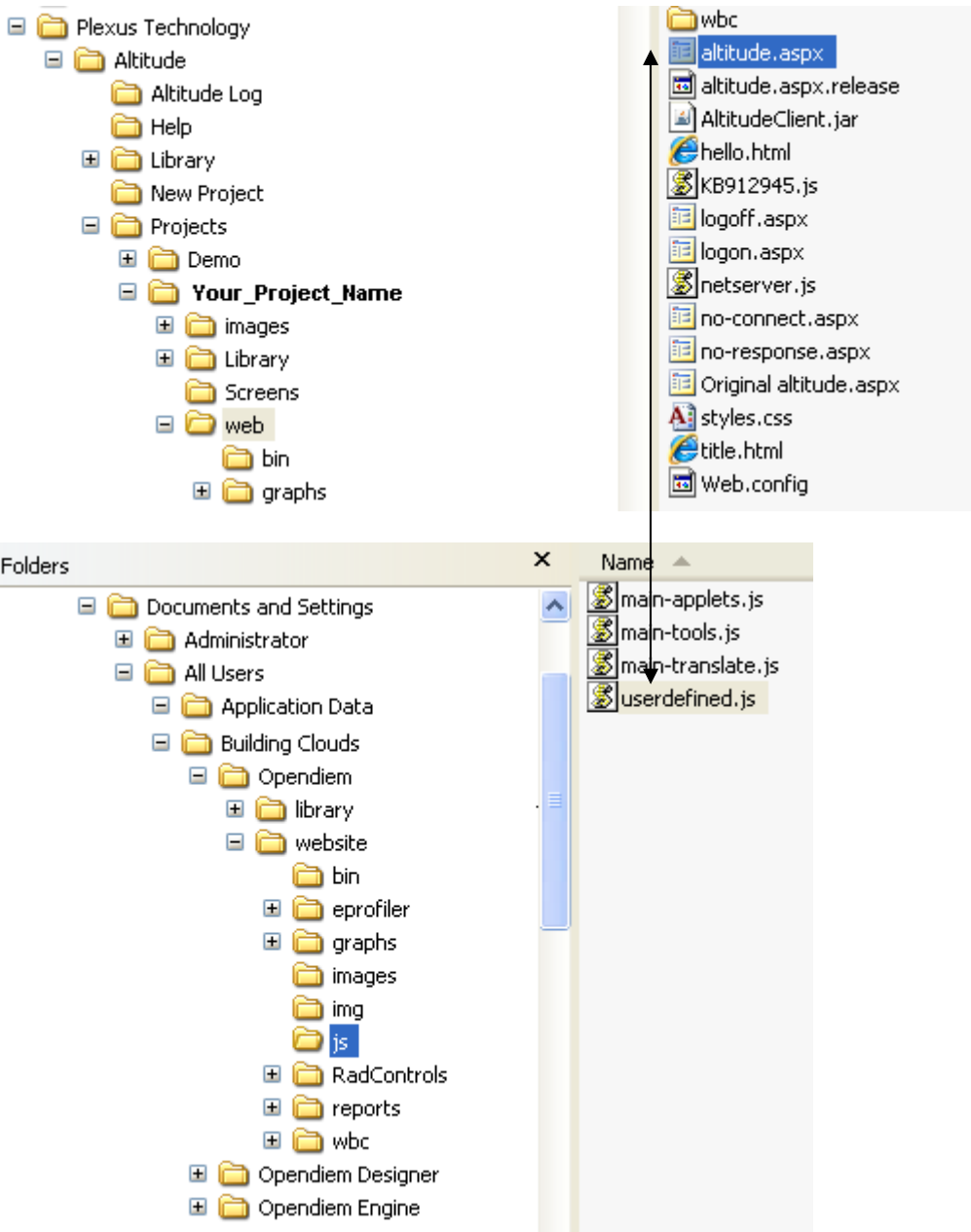
Connect



Designer

STEP-9

If you have modified your altitude.aspx to include custom java functions be sure to add those functions to the userdefined.js file





Engine



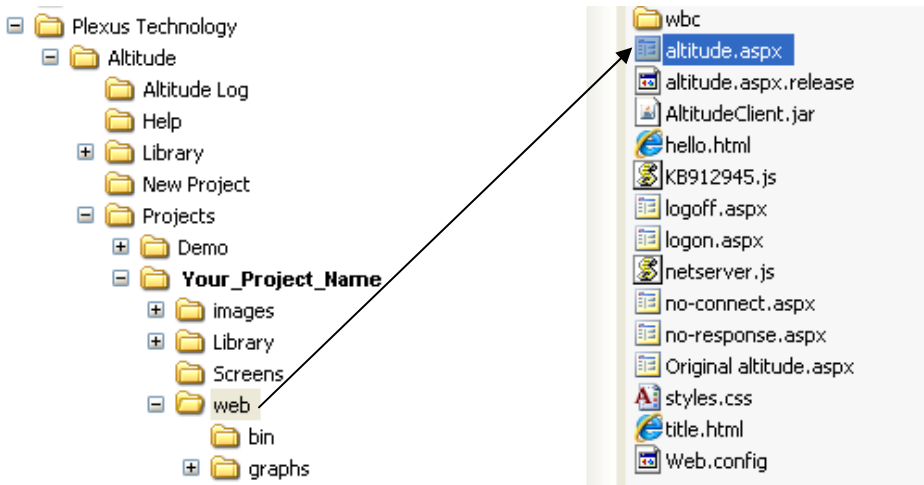
Connect



Designer

STEP-10

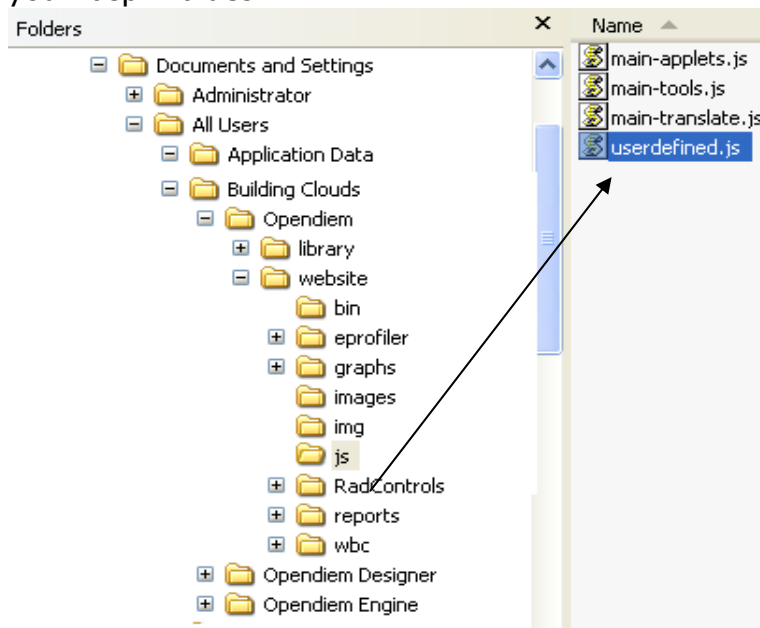
You need to change the default web screen size in Opendiem to match that of your Altitude project. Locate your Altitude.aspx file and open it with Notepad.exe.



Search for the line below in the .aspx file and locate the height and width values. This example has 870 and 1250.

```
<center><APPLET id="Altitude" height="870" archive="AltitudeClient.jar" width="1250"
code="Comet.class"
```

Next find the userdefined.js file and open with notepad. Replace the aHeight and aWidth vars with your .aspx values.



```
var aHeight = '590';   Change to 870
var aWidth = '990';   Change to 1250
```

**** NOTE ****

If you want to hide the “Add to Favorite” banner at the bottom of your page change the “false” to “true” in the statement below.

```
var bHideAddFavorite = false;
```




Engine



Connect



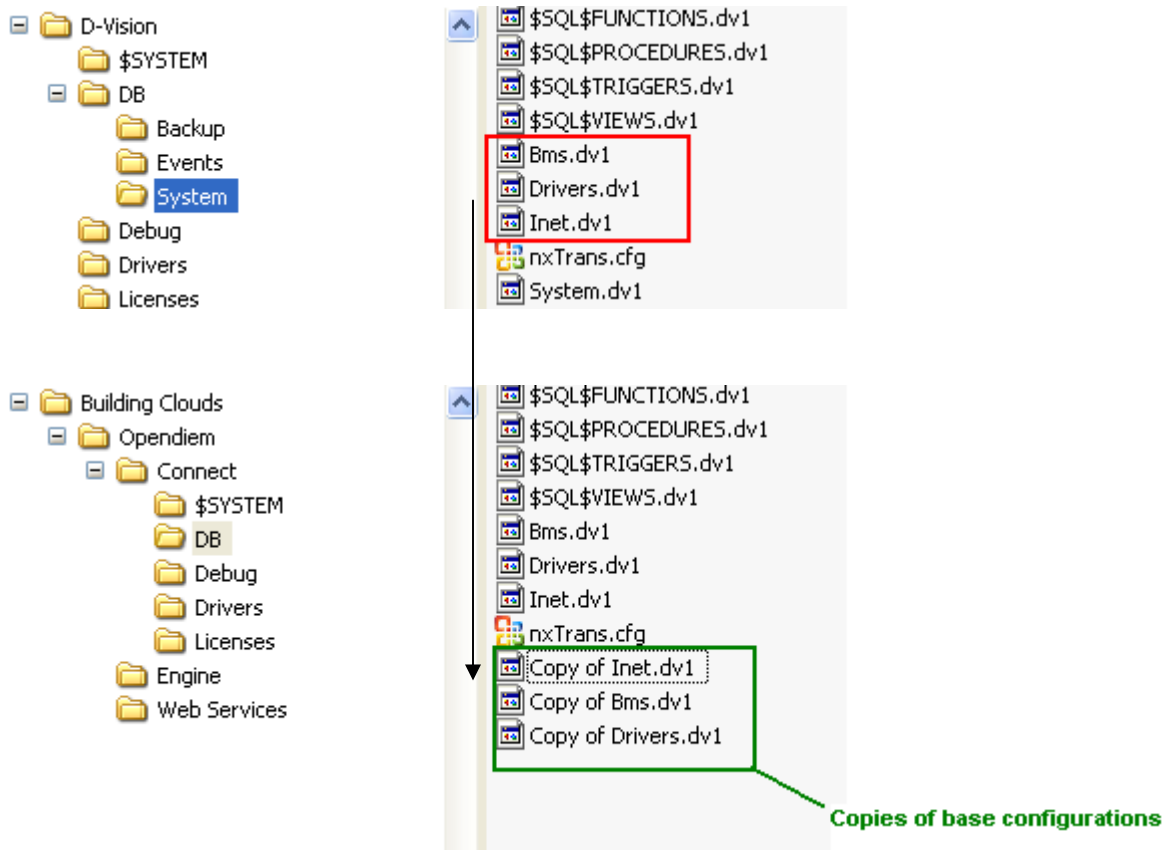
Designer

STEP-11

If you were using the connectivity drivers of Altitude or D-VISION you will want to copy those configuration files to the new Opendiem™ CONNECT folder. Please make a backup copy of the Opendiem Connect drivers PRIOR to copying your Altitude configurations.

NOTE: Depending on the version of the connectivity drivers your system was using your existing configurations may need to be rebuilt under the appropriate Opendiem Connectivity driver. If you were using the connectivity drivers under Altitude 3.1.20 or greater your current configuration should be compatible. New licenses will be required for connectivity drivers.

Contact Technical Support if you have further questions at support@buildingclouds.com





Engine



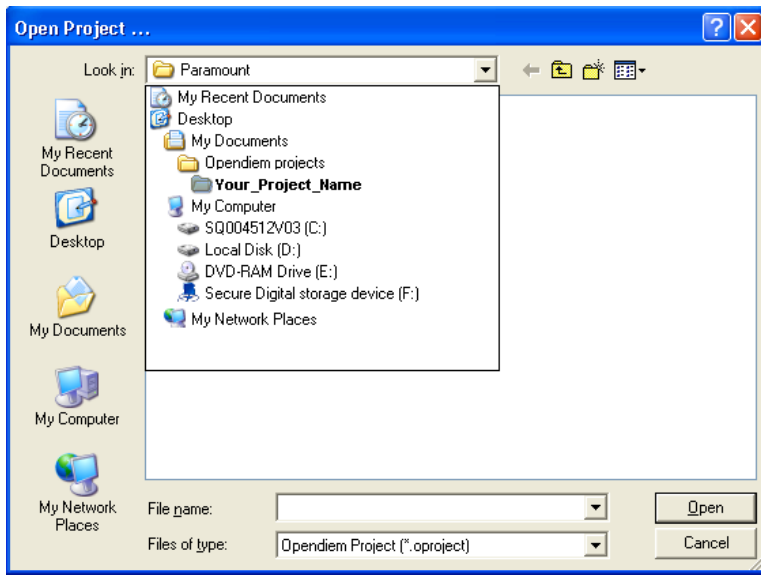
Connect



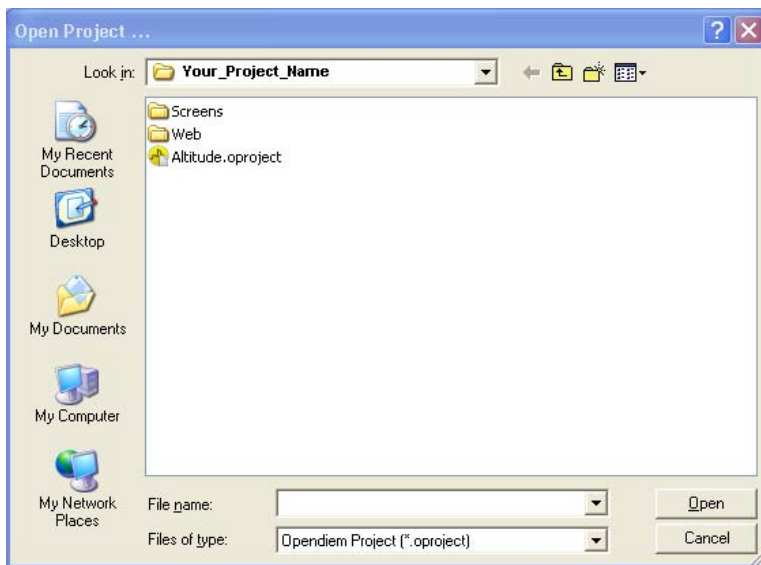
Designer

STEP-12

Start Opendiem Engine and go to FILE – OPEN PROJECT and browse to your new project folder that you created in STEP 1.



Browse to see your Altitude.asn file. Make sure your Files of Types is selected to .asn. Select your file and your project will open.





Engine



Connect



Designer

Opendiem-TECH-0001

OPENDIEM TRAINING TECH-0001

Notes:

Version 5.00 November 2010

All Rights Reserved. Copyright © 2010 Building Clouds. Information contained in this document regarding device applications is intended through suggestion only and may be superseded by updates. No representation or warranty is given and no liability is assumed by Building Clouds, Inc. with respect to accuracy or use of such information or infringement of patents arising from such use or otherwise. Use of Building Clouds products as critical components in life support systems is not authorized except with expressly written approval by Building Clouds. No Licenses are conveyed, implicitly or otherwise, under any intellectual property rights.

All Trademarks mentioned herein are the property of their respective companies

Building Clouds

3229 Whipple Road
Union City, CA 94587

Email: support@buildingclouds.com

<http://www.buildingclouds.com>